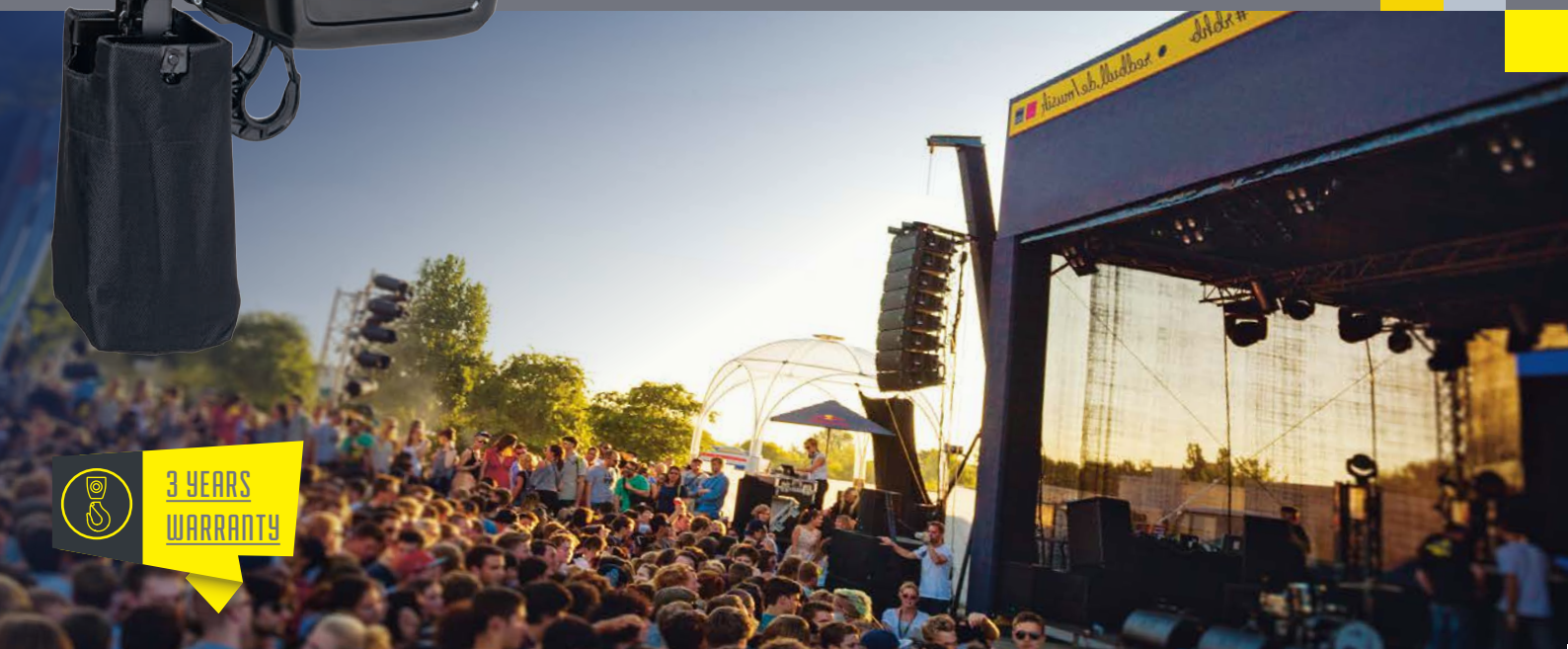




ELECTRIC CHAIN HOIST LP

DESIGNED FOR ENTERTAINMENT LIFTING



WEATHERPROOF
LONG-LASTING
POWERFUL
QUIET
LIGHT

Versions BGV D8, D8 Plus, C1
or country/customer specific

60% increased lifting capacity
for D8 hoist

Low dead weight, 12 kg only
for 320 kg lifting capacity

Powerful built-in motor,
speed up to 32m/min

Extremely quiet running, 65 dB
sound pressure level only

Protection class IP65 and
KTL-coating for mobile outdoor use



SWISSNESS
Swiss Design
Made in Switzerland
Since 1957

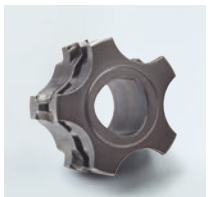
OUTSTANDING FEATURES

LIFTING CAPACITY LPM/LP 100 – 800 KG



Protection class IP65

- Standard
- Dust proof
- Protected against water jets
- Outdoor operation
- Mobile use



Polygonal connections

- All shaft-hub connections are built in a self-centering polygonal design
- Optimal power transmission
- Quick assembly and disassembly



Profile steel chain

- Case hardened and manganese phosphated
- Less wear, increased lifetime
- Chain safety factor min. 8:1 (DIN 56950-1)
- Corrosion resistance



Hooks

- Skeleton load and suspension hooks
- Hook safety catch fastened into position when closed
- Dampening system



Motor

- Powerful built-in motor with power reserve
- Excellent synchronisation for group lifting
- 3- or 1-phase operation



Brake

- Reliable spring loaded DC-brake
- Safe braking of the load
- Independent second brake on existing shaft (D8 Plus, C1)



Transmission

- Smooth running (65 dB)
- 3-step drive with helical gearing
- Permanent lubrication
- Self-contained gearbox



Geared limit switch

- The upper and lower end position of the load hook can be set easily and precisely
- Optionally 2 additional emergency stop contacts available (C1)
- Optionally external end limit switch



Load measurement

- Load sensor integrated in suspension
- Simple installation in special eyebolt or hook suspension
- Optionally mechanical protection



Path measurement

- Absolute or incremental encoder
- Incremental encoder on chain wheel (no housing extension)
- Optionally encoder on drive shaft (with housing extension)



Further options

- Handles
- Safety load locking hook
- Safety radio remote control
- Special gearing up to 32 m/min. speed (at 50 Hz)
- 42 V low voltage control



Maintenance

- Modular design
- Easy to maintain
- Good accessibility of wearing parts
- Quick and simple replacement
- No special tools required