

Connecting Ideas ...

Ideen verbinden.

ERS  
EuRope-Systems  
Connecting ideas

LOUIS REYNERS  
EXCELS IN HOISTING, LIFTING AND FALL PROTECTION



ERS EuRope-Systems GmbH

S-Series

### TÜV (GS) and DGUV test certified according to DGUV regulation 17 (previously BGB-C1)

The RopeFix® S-Series for event equipment was developed in consultation with leading industry specialists.

Because the familiar six-ball mechanics of popular sling gear increasingly no longer meets today's safety requirements, the RopeFix® S-Series has been equipped from the beginning with an improved, patent-pending, 2-level clamping mechanism.

The required detection of component overload was also solved constructively with the RopeFix® S-Series:

If the mechanical load is more than double the workload (according to DGUV, BGI 810-3), a red ring will be visible to the user in the top area of the RopeFix®. This shows the significant overload and also indicates that the component needs to be replaced due to improper overload.

The reason for this is that generally when using balls for clamping ropes, plastic deformations occur when there is an overload.

If the improper overload of the component increases, the second safety level of the clamping mechanism will engage, which is based on a collet principle. Here the 3 segments clamp the rope in a flat cone and achieve the highest breaking load values on the market together with the first level of the clamping mechanism. If the RopeFix® has reached this condition, it is no longer possible to manually push the guide element into the component, which prevents further, possibly dangerous, use.

Through the very high breaking strength of the RopeFix® S-Series, significantly higher workloads can be reached than with usual sling gear for event equipment. In the area of event equipment, the workloads (WLL) listed below apply according to the regulations of the DGUV, BGI 810-3. These are detailed on the inside of this brochure on the left near the product specifications.

#### Minimal breaking loads of the S-Series

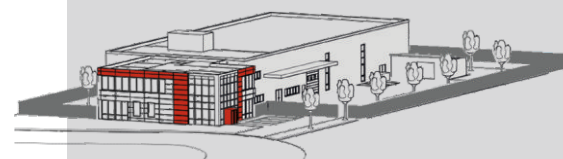
| Wire rope-Diameter | Wire rope-construction          | Wire rope-strength min. | RopeFix 40S | RopeFix 50S | RopeFix 80S |
|--------------------|---------------------------------|-------------------------|-------------|-------------|-------------|
| 4,0 mm             | 6x7+1FE<br>6x19+1FE             | 1770 N/mm²              | 8.000N      |             |             |
| 5,0 mm             | 6x7+1FE<br>6x19+1FE<br>6x37+1FE | 1770 N/mm²              |             | 12.500N     |             |
| 6,0 mm             | 6x19+1FE<br>6x37+1FE            | 1770 N/mm²              |             |             | 20.000N     |
| 8,0 mm             | 6x19+1FE<br>6x37+1FE            |                         |             |             | 35.000N     |

Wire rope construction in accordance with DIN EN 12385-4: 2008

**Tool-free, fast, safe: With this in mind, we, ERS EuRope Systems, develop and manufacture high-quality and innovative mounting systems at our location in Lorsch in the Rhein-Neckar metropolitan region Germany.**

Many years of experience in all aspects of wire-rope suspension – particularly lighting fixtures – combined with constructive creativity and high manufacturing quality make us a sought-after partner today for more and more sectors and applications.

This includes the lighting industry, acoustics, HVAC, sanitation, trade fairs, shop construction, and general mechanical engineering. We quickly and cleverly realise individual solutions on the basis of the maximum compatibility, efficiency, and functionality of our diverse component series and elements and intelligent combination options. We think about our customers and their needs ... And we are always a "rope length" ahead!



#### Louis Reyners BV

Symon Spiersweg 13a 1506 GC  
Zaandam Telefoon: +31 75 650 47  
50 Fax: +31 75 650 47 60  
info@lr.nl  
www.lr.nl

### RopeFix®

For event equipment  
40S 50S 80S



German technology  
available at Louis Reyners BV  
[www.lr.nl](http://www.lr.nl)



Designs  
Types

www.lr.nl



dguv.de/pruefzeichen

**RopeFix® 40S**  
Rope ø4,0mm  
WLL: 60kg  
(according to  
BGI 810-3)



M10A x 12mm  
Item-No: 010-313-4040-1001  
Connecting thread:  
M10 x 12mm External thread  
Length: 57mm  
Diameter: 20mm  
Weight: approx. 100 Gramm



Ring  
Item-No: 010-313-4040-1002  
Diameter: 20mm  
Length: 90mm  
Ring inside diameter: 25mm  
Ring outside diameter: 45 mm  
Weight: approx. 190 Gramm



Fork head and folding spring bolt  
Item-No: 010-313-4040-1003  
Diameter: 20mm  
Length: 97mm  
Fork size: 10mm  
Fork width: 20mm  
Spring loaded bolt: 10mm  
Weight: approx. 190 Gramm  
Color surface fork head: silver

Fork head and folding spring bolts  
Item-No: 010-313-4040-1004  
as above, but:  
Color surface fork head: black



M10I + SSA  
Item-No: 010-323-4040-1001  
Connecting thread:  
M10 x 10mm Internal thread  
Length: 70mm  
Diameter: 20mm  
Weight: approx. 180 Gramm  
(SSA = side rope exit)



Travers clip + SSA  
Item-No: 010-323-4040-1003  
Diameter: 20mm  
(SSA = side rope exit)



Workloads for general  
lifting equipment according to  
TÜV certification number:  
Z1A 15 09 70668 006

**RopeFix® 40S**  
rope ø4,0mm  
Workload (TÜV): 150kg

**RopeFix® 50S**  
Rope ø5,0mm  
WLL: 90kg  
(according to  
BGI 810-3)

M12A x 14mm  
Item-No: 010-313-5050-1001  
Connecting thread:  
M12 x 14mm External thread  
Length: 62 mm  
Diameter: 25mm  
Weight: approx. 160 Gramm

M12A x 20mm  
Item-No: 010-313-5050-1003  
Connecting thread:  
M12 x 20mm External thread  
Length: 68mm  
Diameter: 25mm  
Weight: approx. 160 Gramm

Ring  
Item-No: 010-313-5050-1002  
Diameter: 25mm  
Length: 101mm  
Ring inside diameter: 30mm  
Ring outside diameter: 54mm  
Weight: approx. 320 Gramm

Fork head and folding spring bolt  
Item-No: 010-313-5050-1004  
Diameter: 25mm  
Length: 110mm  
Fork size: 12mm  
Fork width: 24mm  
Spring loaded bolt: 12mm  
Weight: approx. 300 Gramm  
Color surface fork head: silver

Fork head and folding spring bolt  
Item-No: 010-313-5050-1005  
as above, but:  
Color surface fork head: black

M12I + SSA  
Item-No: 010-323-5050-1001  
Connecting thread:  
M12 x 12 mm Internal thread  
Length: 78mm  
Diameter: 25mm  
Weight: approx. 250 Gramm  
(SSA = side rope exit)

Travers clip + SSA  
Item-No: 010-323-5050-1003  
Diameter: 25mm  
(SSA = side rope exit)

**RopeFix® 50S**  
rope ø5,0mm  
Workload (TÜV): 250kg

**RopeFix® 80S**  
Rope ø6,0mm  
WLL: 135kg  
(according to  
BGI 810-3)

Rope ø 8,0mm  
WLL: 240kg  
(according to  
BGI 810-3)

M20A x 17mm  
Item-No: 010-313-8080-1001  
Connecting thread:  
M20 x 17mm External thread  
Length: 90mm  
Diameter: 40mm  
Weight: approx. 600 Gramm

M20A x 30mm  
Item-No: 010-313-8080-1003  
Connecting thread:  
M20 x 30mm External thread  
Length: 103mm  
Diameter: 40mm  
Weight: approx. 620 Gramm

Ring  
Item-No: 010-313-8080-1002  
Diameter: 40mm  
Length: 144mm  
Ring inside diameter: 40mm  
Ring outside diameter: 72mm  
Weight: approx. 950 Gramm

Fork head and folding spring bolt  
Item-No: 010-313-8080-1004  
Diameter: 40mm  
Length: 178mm  
Fork size: 20mm  
Fork width: 40mm  
Spring loaded bolt: 20mm  
Weight: approx. 1.300 Gramm  
Color surface fork head: silver

Fork head and folding spring bolt  
Item-No: 010-313-8080-1005  
as above, but:  
Color surface fork head: black

M20I + SSA  
Item-No: 010-323-8080-1001  
Connecting thread:  
M20 x 15mm Internal thread  
Length: 135mm  
Diameter: 40mm  
Weight: approx. 930 Gramm  
(SSA = side rope exit)

M12I + SSA  
Item-No: 010-323-8080-1003  
as above, but:  
Connecting thread:  
M12 x 15mm Internal thread  
(SSA = side rope exit)

Travers clip + SSA  
Item-No: 010-323-8080-1005  
Diameter: 40mm  
(SSA = side rope exit)

**RopeFix® 80S**  
rope ø6,0mm  
Workload (TÜV): 370kg

rope ø8,0mm  
Workload (TÜV): 600kg

**Locknut** against  
accidental release  
of the clamping  
mechanism

**Overload  
indicator** for  
significant over-  
loads of the  
workload (compo-  
nent must be  
replaced)

Collet as **2nd  
Safety level**  
only activated  
in case of  
overload

Proven **3-ball  
mechanism**  
for the work-  
load area

Surface **matt black**  
for reduced light reflection

Connecting thread

Patent-pending mechanism

