

LODESTAR®

ELECTRIC CHAIN MOTOR

2-TONNE SINGLE-REEVED

The CM® entertainment Lodestar® is now available as an economical 2-tonne, single-reeved unit that's ideal for a variety of lifting applications. And, because it's a single-reeved unit, overall weight is decreased making it easier to transport and rig compared to a traditional double-reeved unit.

BENEFITS & FEATURES

IP 66 RATING

An Ingress Protection (IP) Rating of 66 indicates that the Lodestar offers protection from dust and high-pressure water – making this unit ideal for use in outdoor environments.

HIGH-PERFORMANCE COMPOSITE CORD GRIPS

Prevent water from entering the motor body at the pendant and power cord points of entry.

CONTINUOUS GASKETS

Create a waterproof seal between the gearbox assembly and the back frame and motor covers.

O-RINGS

ON LIFT WHEEL BEARING

Prevent water from entering the motor body through the lift wheel opening.

EASY TO TRANSPORT & RIG

With less chain than double-reeved units, the 2-tonne, single-reeved Lodestar is lighter, making it easier to transport and rig.

ZINC PLATED LOAD CHAIN

Designed and manufactured in the USA by Columbus McKinnon, our 10 millimeter, zinc-plated Star Grade load chain protects against corrosion.

IMPROVED CHAIN LIFE

5-pocket lift wheel provides better chain and lift wheel engagement for smoother lifting and reduced vibration, equating to less wear and a longer chain life.

LESS MAINTENANCE & EASIER INSPECTION

- Brake location allows for quick access and easy inspection.
- Lifetime grease-lubricated gear box means no oil change is required.
- Clutch located outside the gear box allows for easy access, which eliminates the need for complete disassembly and reduces downtime.

IMPROVED SERVICEABILITY

Easy access to the clutch, motor, electrical control panel and brake assembly.

METRIC RATED

EASY-ACCESS CONTROL PANEL

Finger-safe wiring and plug-and-play connectors on the control panel allow for quick voltage change, easy access to terminal strips and simple fuse installation.

LONGER SERVICE LIFE

- Heavy-duty DC brake is designed for a long service life.
 - Lifetime grease-lubricated gear box and helical gearing ensures better wear and smooth operation.
- Heavy-duty-rated motors.

IMPROVED LOAD SAFETY

Clutch is located outside the load path, preventing slipping of the load in an overload condition when the brake is not powered.

ADJUSTABLE LIMIT SWITCH

Easy-to-adjust screw limit switch automatically stops the hook at any predetermined point when either lifting or lowering, preventing overtravel.

OVERLOAD PROTECTOR

Helps prevent lifting of dangerous overloads.

STANDARD ROTATABLE LIMIT SWITCH

Designed for quick reset of limit position.

LIFETIME WARRANTY

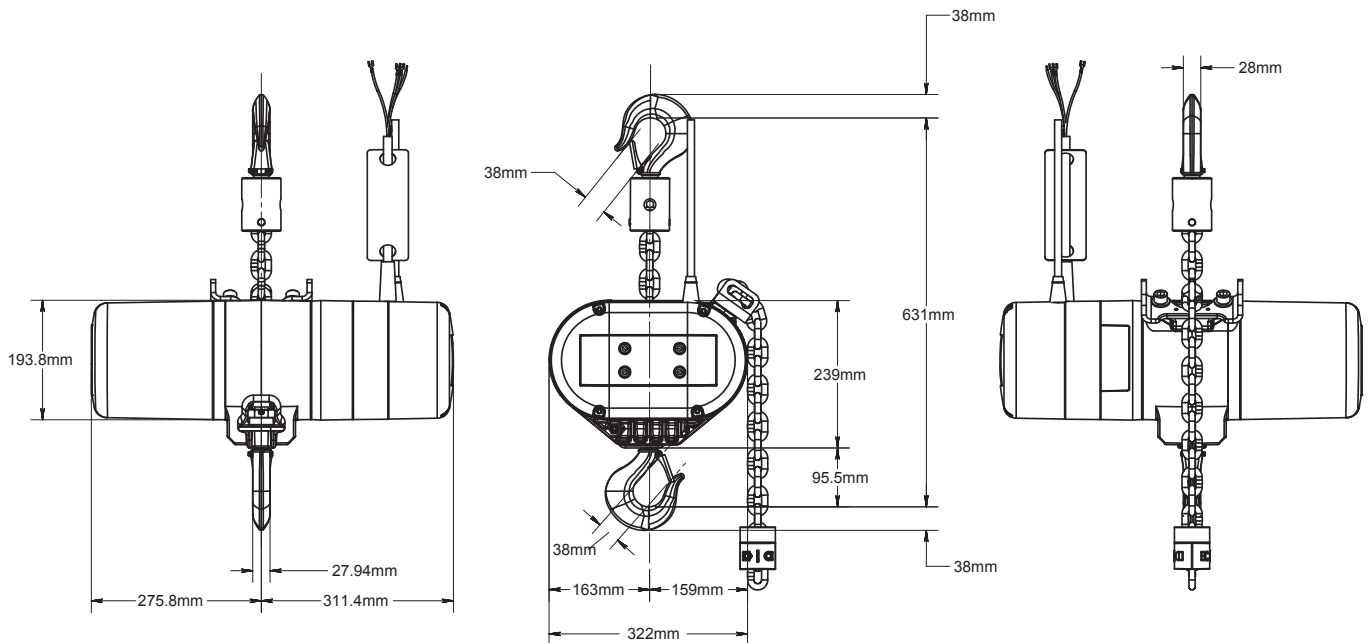
The industry's best warranty against manufacturing and material defects.

SWIVEL OR RIGID HOOK SUSPENSION AVAILABLE



NEW HIGH-PERFORMANCE COMPOSITE CORD GRIPS





Dimensions are RRS model CM-ET Lodestar 2 tonne Single Reeved with Swivel Latch Type Hook Suspension.

OPTIONAL FEATURES

DOUBLE DC BRAKE

Two independent acting DC brakes for redundant braking. Field installation kit available.

DOUBLE LIMIT SWITCH

Adjustable screw limit switch that will automatically stop the hook at any predetermined point when either hoisting or lifting.

ENCODERS

Available for positioning incremental and absolute.

VARIABLE SPEED UNITS AVAILABLE (VFD)

Varistar or variable speed versions available, please contact your CM-ET sales representative for details.

CM ALLOY LATCHLOK® HOOKS

Latchlok® hooks combine innovative design and solid alloy steel. I-beam construction offers more reliable performance than any other hook on the market.

- One-hand operation and recessed push-button thumb release for smooth and dependable opening.
- Hook remains locked until released by the operator, even if chain goes slack.
- Sturdy forged heat treated I-beam construction for strong, yet lightweight hooks.
- Lifetime warranty.
- Made in U.S.A.

DIRECT CONTROL UNITS

The CM Lodestar is available as a Direct Control Unit. Featuring a single cable, this Direct Control Unit can be used as part of a system with multiple units with a single control. The Lodestar is compatible with most Direct Control Motor Controllers.



**RIGGERS
WORLD**
LIFT UP YOUR GIG

AUTHORISED DISTRIBUTOR FOR COLUMBUS MCKINNON ENTERTAINMENT PRODUCTS

Symon Spiersweg 13A, 1506 RZ Zaandam, The Netherlands, Postbus 2118, 1500 GC Zaandam, The Netherlands

Tel: +31 (0)75 650 47 52 | Fax: +31 (0)75 650 47 60 | www.riggersworld.eu